

Free

For a digital copy
scan QR code



Cover designed by Christopher Frost

47th Soham Pumpkin Fair
Saturday 25th September 2021
Soham Recreation Ground 1.30 – 5.00pm
www.sohampumpkinfair.co.uk



Committee Message

Dear Friends of Soham Pumpkin Fair

Welcome to our 47th Fair! 2020 was the first time in our history that we were unable to hold our usual event. Instead, we held an online version for arts and crafts, and for everything that is weighed or measured we had a 'drive-through' weigh-in/measure-off.

This year we are back to normal well nearly! We were unable to raise any funds last year, so our chosen beneficiaries for 2020 - Soham Men's Shed, Cambridgeshire Wildlife Care, and Soham Community Uniform Scheme are the same for this year.

Our theme for 2021 is '*Wild and Beautiful*' - celebrating British wildlife (see the back page). There will be displays from Fens Falconry, 'SlackMaGirdle' Morris dancers and Soham-based club: SCT Dance.

After the difficulties of the past 18 months we are looking forward to welcoming you back to the Recreation Ground. Please follow any regulations that we may have to put in place. Thank you for your continued support and we hope that you enjoy your day at this year's Fair.

Soham Pumpkin Fair Committee

PS If you have *any* ideas for next year, post them in our 'Suggestion Box' in the Pavilion.

Entrance Fees:

Adults	£2.00
Concessions	£1.00
12 – 17s	£1.00
Under 12s	Free

Car Boot Fees:

Car - £7.50 Van - £10.00

Please arrive on site by 11am

Parking:

If you live locally, please walk to the Fair if you can. If you are driving, use the Gardeners Lane access onto the site.

Stewards will inform you where to park.

Car Parking £1.00 + entry fees.

Contents	Page
Welcome for 2021	2
Our Theme: 'Wild and Beautiful'	4
Our chosen beneficiaries for this year	5, 6 & 8
What's on this year	10 - 13
Cheque Presentation Evening 2019	15
Previous year's beneficiaries	16 & 17
Pumpkin Competitions	18
Sunflower Competitions	19
Other Produce Competitions	20
Our Competition Rules	21
Indoor Competitions	22 - 23
Entry Form and Label	25
Vaccination Walk-in Clinics	27
'We must keep protecting each other'	28



Our theme for the day is: 'Wild and Beautiful'.

As per last year, we have taken our inspiration from 'Earthshot: How to Save Our Planet' - a prize (launched by Prince William and the Royal Foundation) designed to incentivise change and help to repair our planet over the next ten years. Many of our competitions and displays will be based around our theme of British wildlife, and we hope it will inspire children and adults alike to think much more about this wonderful world in which we all live.



The following is taken from The Natural History Museum website:
www.nhm.ac.uk/discover/british-wildlife.html:

The British Isles are home to an astounding variety of plants and animals - and new species are still being discovered and arriving here from overseas. Sadly, not all is well with British wildlife, in fact, we have brought about a devastating state of affairs: 56% of UK species declined between 1970 and 2013. This is down to a combination of factors, but all of them ours in the making. It's not all bad news, however, there are positive steps being taken to protect the UK's biodiversity, including the reintroduction of native species driven extinct by human impact, and research informing other conservation opportunities. Members of the public can help our wildlife by documenting what is in their garden or by joining larger conservation organisations and lending them a helping hand.



There are many groups, both nationally and locally who are looking out for our wildlife - but did you know about '**Soham Hedgehog Guardians**' (SHG). This Facebook group is run by Anita Nixon. The aim is to raise awareness about local hedgehog populations and help maintain and possibly grow their numbers in our community.

Anita says 'I want to encourage friends and neighbours to look out for them, create through-ways from garden to garden, put appropriate food out, be more aware when driving or before lighting bonfires etc. I give tips and advice on how to help/encourage hedgehogs into your garden, timely reminders, and of course videos from my garden, *Hedgehogs End*.' She raises money and encourages people to give food donations for hedgehogs in care at Cambridgeshire Wildlife Care (CWC).

Anita will be at the Fair, along with Tara Livermore (CWC), helping to judge competitions and running a tombola stall. Don't forget to give her your colouring competition entry!

Our chosen beneficiaries for this year



Cambridgeshire Wildlife Care is a charity dedicated to the rescue and rehabilitation of wildlife in Ely and the surrounding area. We are an independent organisation run by our Co-Founder and Centre Manager, Tara Livermore, and a small team of volunteers. We are supported by two local veterinary surgeries.

We care for orphaned, injured, ill and abandoned animals with the aim of returning them to the wild. Our vision is that every wild animal in need of assistance in Cambridgeshire is given the specialist care and support it needs to ensure the best chance of survival and release back to the wild.

If you find a young animal, please be sure it needs help before attempting to handle it. Every animal is better cared for by its natural parents if possible. If rescue is needed, please remember all wild animals are afraid of humans and can go into shock easily. Wild animals cannot be comforted like domestic animals. It is best for the animal to limit the contact you have with it. If you need to capture or transport/contain it, place it in a secure cardboard box or pet carrier, and cover the box/carrier with a blanket or towel.

Do not attempt to rescue any animal if it will put you in danger eg on roads or near water. For larger birds or animals, always call a wildlife rescue centre or the RSPCA for advice. Do not do anything that is likely to cause harm to you or to others.



For more advice and more ways to help us, see our website:
www.cambswildlifecare.org.uk/ or www.facebook.com/CambsWildlifeCare
Contact Tara Livermore -Tel: 07977 320320 Email: info@cambswildlifecare.org.uk



Our chosen beneficiaries for this year

SOHAM COMMUNITY UNIFORM SCHEME



3 local Soham mums have teamed up to provide school uniform packs to those in need in the community. They provide packs for all 3 Soham primary schools and also Soham Village College.

Amy Bugg, Sarah Hunt and Jo Isbell fill the packs with school trousers, skirts, shoes, backpacks, tights, socks, PE kits, school coats, underwear, trainer, jumpers, cardigans and lunch boxes. Donation boxes will be put in each school's reception area, so if anyone has any items that they no longer need and are still in good condition, they can be put into one of these boxes.

The group also hopes to start a 'clothes bank' and say: "When shopping for your children's uniform perhaps you could spare a few pounds to buy an extra pack of polo shirts, some underwear, or a pair of trousers". Sarah Hunt, of the group, said: "The scheme has been created to ensure that all children in the community have the chance to start school with a uniform. We have created posters and collection points in each primary school in Soham.

The group are desperately looking for a space to store all of the uniforms, and ideally run a pop up shop once a month where families can call in and pick up any uniform that they need. They are hoping that this will happen at some point this year, enabling them to assist more of the community more quickly.

For more information please email: sohamcommunityuniformscheme@gmail.com



A Facebook page has been set up specifically for uniform sales and donations, and we are asking that you join so we can update you all regarding any current donations that we are in need of.



Julie's Equestrian and Pet Services

www.juliesequestrianandpetservices.co.uk
SOHAM AND SURROUNDING VILLAGES

- ADVENTURE AND SOLO WALKS
- CAT SITTING AND POP IN SERVICES
- FARM ANIMALS AND HORSES
- HATCHING EGGS AND CHICKS

- Fully Insured -Level 3 in Animal Psychology -First Aid Trained
- Level 3 in Equine Psychology And Behaviour
- NarpsUK Registered

07581256378 FIND US ON FACEBOOK

FENLAND FINE FINISHES LTD



MELVIN PEACOCK

Traditional plasterer
Venetian artisan

enquires@fenlandfinefinishes.co.uk
07525483438

Our chosen beneficiaries for this year



Well, it's been a trying couple of years for our Shed and indeed all Sheds in the UK, with Covid taking its toll. But at last we can see some light at the end of the tunnel with the resumption of some activities.

Men's Sheds are similar to garden sheds – a place to pursue practical interests at leisure, to practice skills and enjoy making and mending. The difference is that garden sheds and their activities are often solitary in nature while Men's Sheds are the opposite. They're about social connections and friendship building, sharing skills and knowledge, and of course a lot of laughter. Activities in Sheds vary greatly, but you can usually find woodworking, metalworking, repairing and restoring, electronics, model buildings or even car building in a typical Shed. Sheds typically attract older men, but many have younger members and women too. Whatever the activity, the essence of a Shed is not a building, but the connections and relationships between its members.

We have decided to stay in our current location at South Angle Farm (in the old barn on the left, just after the entrance cattle grid). It's a bit out of the way, however we have the use of a lovely old brick built barn and a well equipped workshop. Our current project is to make this a more inviting and comfy location especially for winter meetings. To that end we are installing a glazed wall with doors behind the security roller-shutter. We will also be painting the walls white, connecting the water supply and organising drainage for our kitchen sink. We plan to upgrade the lighting - some new LED light fittings would be ideal for this purpose if funds permit.

Our biggest shortage at this time is members, so come along on a Thursday morning 10am for a cup of tea and a natter. We are an amiable bunch with various skills to offer, and of course we welcome anyone who can offer a new skill set to help and assist. We charge a nominal £2 a week and if the membership significantly increases there is no reason why we cannot open on other days.

So come along and give us a go!

**Howard Laver (Chair)
& Robert Chippett
(Secretary)**

Contact us

Tel: 07900 128923

email: theshed-sham@hotmail.com





C J MURFITT LTD

Commercial, Industrial & Residential Building Contractors



Building Contractors for all types of building
works

12A The Shade, Soham, Ely, Cambs,
CB7 5DE

01353 720002 admin@cjmurfitt.com



What's on this year?

There will be lots of competitions and activities based on our theme:

'Wild and Beautiful' (British Wildlife)

Children's Fancy Dress - come and dress up as anything 'Wild and Beautiful' (starting at 1.15pm)

The Fair will be opened at 1.30pm by Tara Livermore (Cambs Wildlife Care)

Arena displays

Flying demonstrations and a static display of Birds of Prey by **Fens Falconry**

Morris Dancing with a steampunk twist by **'SlackMaGirdle'**

A Grand Auction with TV's celebrity Auctioneer **David Palmer**

Dance Routines by Soham based club **SCT Dance**

On the field - Soham Classic Cars and other vintage vehicles, Gray's Funfair, BBQ, Charity Stalls and Refreshments

In the Pavilion - book stalls, a Wildlife Photographic exhibition and all our trophies on display

In the Scout/Guide Building - Bygones, Anita's Scrapbooks and our indoor competition entries



Fens Falconry

Information • Education • Conservation



Fens Falconry CIC is a not for profit organisation, delivering exciting experience days and vitally important education to promote ecology and conservation.

Come and see these wonderful birds on display at our Fair.

'Slack Ma Girdle'

'We are broadly a Border style Morris side, but we have an eclectic taste for any dances or music that we like! Our kit for dancing out is 'Steam Punk Victorian' style in colours: Red, Black & Turquoise.'

Border Morris is a collection of individual local dances from villages along the English side of the Wales – England border in the counties of Herefordshire, Worcestershire and Shropshire.

The name 'Slack-Ma-Girdle' derives from an ancient variety of Somerset cider apple.'





Not just a dance class. We build confidence. We set goals and smash them.

Wildlife Photographic Exhibition

About DS Photography

"My name is Dan Starling and I am 17 years old. My passion for photography started with wildlife and birds, becoming an award winning photographer in my genre and age."



He topped the Rotary Great Britain & Ireland Senior Competition, which was

themed

'wild nature' for this year, with his entry of a puffin!



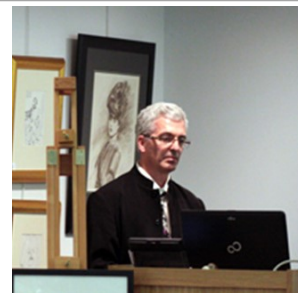
"Over lockdown 2020, the idea of venturing into a new genre of photography became an idea which has now, become my passion and future. Specialising in newborns, children, families and pets, I hope to capture your special moments allowing you to cherish them forever."

You can see more examples of his work (and an opportunity to buy) in The Pavilion.

David Palmer, Auctioneer


We are delighted to have David return to the Fair. He has helped out in the past as compere for the day, but this year he will be putting his auctioneer skills to good use. He will do his very best to encourage you to bid ever higher for our lots on offer.

For those of you who don't know him, David is an experienced auctioneer and has also appeared on several TV programmes including Flog it, Bargain Hunt and Cash in the Attic.




So, dig deep into those pockets and bid for the interesting lots we have on offer. See our website and Facebook for more details nearer the day.

Pumpkin Recipe Book On Sale Today



Soham Pumpkin Fair
Recipe Book



All recipes include
squash or pumpkin

Soups
Stews
Savoury and Sweet
Pies
Muffins
Cookies
Ice cream
Breads
Jam
Wine
And much more

Only £4!

Soham Classic Vehicle Club

There will be a static display of classic vehicles including cars, tractors, motorbikes, commercial and military vehicles. (Courtesy of Mr P. Cox)

You are most welcome to come along on the day and join in with the fun.

For further information email the organisers using the address below:

office@sohampumpkinfair.co.uk





Bellingham's Couriers

NATIONWIDE COURIER SERVICES

07725894012

www.bellinghamscouriers.co.uk
info@bellinghamscouriers.co.uk



Like Us On
Facebook



BYGONES

Visit a collection of
bygones, scrapbooks and
other memorabilia in the
Scout and Guide
Community Centre.



Cambridgeshire Hydraulics & Pneumatics Limited

97 Mereside, Soham, Cambridgeshire, CB7 5EE

Email: sales@cambs hydraulics.com

Tel: 01353 721 704



We Can Supply a Large Range of Hydraulic Parts from stock:

- Hydraulic Hose & Steel Tube Assemblies (Made While you wait)
- Hydraulic, Engine & Gear Box Oil
- Hydraulic Adaptors & Seals
- Pumps, Motors & Filters
- Diesel Fueling Equipment



Cheque Presentation Evening 2019

In November 2019, we were delighted to be able to award

Friends of Soham Village College £750

Soham Community Group £750

St. Andrew's Church £1500

Any organisation wishing to be considered as a beneficiary for the 2022 Fair should apply in writing to the committee from the 1st October 2021 to 31st January 2022, stating the aims of the organisation and what they would like to put the money towards.

Send your application to office@sohampumpkinfair.co.uk



If you would like to join our committee, please let us know on the same email address above.

Beneficiaries 1975-2001

<u>Year</u>	<u>Amount</u>	<u>Beneficiary</u>
1975	£176	Soham St. Andrews Church Tower Fund
1976	£880	Soham Clinic Mini-Bus Appeal
1977	£596	S.B.A towards Jubilee Coins for Soham Children
1978	£1000	Various Soham Associations
1979	£962	Newmarket General Hospital for Orthopaedic Beds and Wheelchairs
1980	£500	MAGPAS (Helped equip 2 Soham Doctors)
1981	£1000	St John's Ambulance Appeal
1982	£900	Soham Parish Council (tables and chairs)
1983	£1062	Various Soham Organisations
1984	£1045	Various Soham Organisations
1985	£765	Various Soham Organisations
1986	£700	Various Soham Organisations
1987	£800	Graham Rowley Leukaemia Fund
1988	£800	Milton Hospice
1989	£750	Papworth Hospital, S.N.A.P. Sue Ryder
1990	£1000	Fen Probe Talking News Service for the Blind
1991	£800	Assisted Ventilation Unit, Newmarket General Hospital
	£100	Keith Leonard House
1992	£700	Professor Sir Roy Calne's Research Fund
1993	£700	Multiple Sclerosis
1994	£900	The Weatheralls and St Andrews Schools
1995	£650	The Princess of Wales Hospital
1996	£650	The Windmill Playgroup Soham
1997	£500	The Children's Wards: Addenbrookes Hospital
1998	£500	The Soham, Isleham and Fordham Nurses Fund
1999	£1200	MAGPAS
2000	£1500	The Weatheralls and St Andrews Schools
2001	£1400	St Andrews Church

Beneficiaries 2002-2021

<u>Year</u>	<u>Amount</u>	<u>Beneficiary</u>
2002	£1400	Dance for Fun, Soham Town Colts Girls (Under 12s), Time For Me, St John's Ambulance
2003	£1200	Soham Sight, Ely Hockey Club (Under 12s)
2004	£800	Viva Youth Theatre
2005	£1050	Noah's Ark, MAGPAS, St John's Cadets
2006	£1200	Soham Town Colts, Soham Fenlander Majorettes
2007	£2400	Soham Dive Club, Soham Twinning Association, Ely Roller Hockey
2008	£1000	Equipment for the Soham Guide and Scout New Building
2009	£2750	Hearing Dogs For Deaf People
2010	£1800 £705.40	The Weatheralls & St Andrews Primary Schools Help for Heroes
2011	£2500 £300	Soham Guide and Scout Hut Fund, Soham Over Sixties
2012	£2100	Molyn Care, Ely Youth Choir, Soham Ladybugs Playgroup
2013	£2400	Soham Friends, Soham Holiday Playscheme, Soham Guiding Group
2014	£1300	Soham Museum, Soham Playgroup, Soham Action 4 Youth
2015	£2000	Little Miracles, Soham Young Farmers, Soham Heritage & Tourism & Weatheralls Allotment Project
2016	£1700	Shade Primary School P.T.F.A., Soham United Football Club Youth Teams, Pos+Ability and Soham Community Archive
2017	£2000	Creative Minds & Soham Community First Responders
2018	£1950	Liam Fairhurst Foundation & Soham's Primary Schools
2019	£3000	Friends of Soham Village College, Soham Community Group & St Andrew's Church
2020		No beneficiaries this year due to Coronavirus Pandemic Awards deferred until 2021
2021	?	Soham Men's Shed, Cambridgeshire Wildlife Care & Soham Community Uniform Scheme

Pumpkin Competitions

Group	Class	1st	2nd	3rd
1	Soham 16+ Male	Lawrence Cup + £5	£3	£2
2	Soham 16+ Female	Bavester Cup + £5	£3	£2
3	Soham Village College Students	Bert Peacock Memorial Shield + £3	£2	£1
4	The Weatheralls Pupils	Ryder Trophy + £3	£2	£1
5	St Andrew's Pupils	Ron Manning Memorial Cup + £3	£2	£1
6	The Shade Pupils	Border Farm Timber + £3	£2	£1
7	Soham Children Under 16 attending schools outside Soham	£3	£2	£1
8	Soham Pre-School Children	£3	£2	£1
9	Heaviest Pumpkin grown by 2nd Soham Scout Group	Scout Pumpkin Shield		
<i>Heaviest Pumpkin grown by Soham Child (Groups 3 - 9) wins the Murfitt Cup</i>				
<i>Heaviest Pumpkin from Soham Groups (Groups 1 - 9) wins £50</i>				
10	Heaviest Pumpkin grown by Non-Soham Resident (Child: Under 16)	Shropshire Cup + £10	£5	£2
11	Heaviest Pumpkin grown by Non-Soham Resident (Adult)	Boyce Cup + £10	£5	£2
12	Heaviest Pumpkin grown in East Anglia	Williams East Anglian Cup + £20	£3	£1

All children entering any of the pumpkin groups will be entered into a raffle to win £10, courtesy of Maudie Manning (in memory of Reg Rogerson).

Sunflower Competitions

Group	Class	1st	2nd	3rd
13	Biggest sunflower head grown by Under 16s	£3 + The Manning Cup	£2	£1
14	Biggest sunflower head grown by Adult	£3	£2	£1
<i>Biggest Sunflower Head from Groups 13 and 14 will win the TSB Cup</i>				
15	Tallest sunflower grown by Under 16s	£3 + The Knott Trophy	£2	£1
16	Tallest sunflower grown by Adult	£3	£2	£1
17	Tallest sunflower grown by 2nd Soham Scout Group	Scout Sunflower Shield		
<i>Tallest from Groups 15, 16 and 17 will win The Digital Trophy</i>				



Winners from 2020

Heaviest pumpkin grown in Soham by Andrew Fletcher 141.0kg

Heaviest sugar beet in show grown by Chloe Phillips 5.65kg

Biggest sunflower head in show grown by David Long 36cm

Tallest sunflower in show grown by Bernard Castling 350cm

Other Produce Competitions

Group	Class	1st Prize	2nd Prize	3rd Prize
18	Heaviest Potato (unwashed)	£3	£2	£1
19	Longest Leek (without roots)	£3	£2	£1
20	A presentation of five different items of fresh Home Grown Produce - <u>One</u> of each type	Alfie Wells Cup + £3	£2	£1
21	Heaviest Marrow grown by a Child	S.B.A. Cup + £3	£2	£1
22	Heaviest Marrow grown by an Adult	£3	£2	£1
23	Longest Carrot (Excluding Green Top) grown by anyone	£3	£2	£1
24	Heaviest Tomato grown by anyone	£3	£2	£1
25	Longest Runner Bean grown by a child	£3	£2	£1
26	Longest Runner Bean grown by an adult	£3	£2	£1
27	Heaviest Onion grown by anyone	Eric See Cup + £3	£2	£1
28	Heaviest Sugar Beet grown by anyone (sponsored by Peter Cox)	Albert Cox Cup + £10	£2	£1
29	Pre-carved Pumpkin (On theme of your choice)	£3	£2	£1

Winners from 2020

A Presentation of Five Fresh Vegetables grown by Shona Wallace
 Heaviest Potato in show grown by Dani Fletcher 773g
 Heaviest Tomato grown by Bernard Castling 495g
 Longest Runner Bean in show grown by Maudie Manning 34cm
 Heaviest Onion grown by Morgan Williams Haynes 692g

Competition Rules

1. **The decision of the judges and committee must be accepted as final.**
2. The committee cannot be held responsible for any accident, loss or damage to exhibitors, spectators or their entries howsoever caused.
3. **ALL ENTRIES** must be brought to the Recreation Ground between 9.30am and 11.30am on the morning of the Fair.
4. **ALL ENTRIES** must be accompanied by a completed entry form, to be handed in at registration.
5. **ALL ENTRIES** must be labelled with the owner's name and group number.
6. Failure of entry form/label will mean the subject not being entered.
7. **ALL ENTRIES** to be removed by their owners between 5.00pm and 5.30pm.
8. Cups and trophies to be held for one year only. These need to be returned by September 1st the following year.
9. The **Williams East Anglian Cup** competition is open to the following counties - Bedfordshire, Buckinghamshire, Cambridgeshire, Essex, Hertfordshire, Leicestershire, Lincolnshire, Norfolk, Northamptonshire, Rutland and Suffolk.
10. The sunflowers are measured as follows:
Biggest head - across the seeds' widest point.
Tallest - cut off at ground level to top of flower head.
11. Runner beans **will** be measured along the length (around the curve if curved not tip to tip)
12. Carrots **will** be measured from the top to the bottom of the storage root (no foliage).
13. **All entries that need to be weighed must be labelled with relevant group numbers before they go on the scales!**



Indoor Competitions

Group	Class	1st Prize		
A	Scouts	Scout Cup		
B	Cubs	Cub Shield		
C	Beavers	Beaver Shield		
D	Soham Brigade - Junior & Senior	Boys Brigade Cups		
E	Women's Institute	W.I. Trophy		
F	Guides	Guide Shield		
G	Brownies	Brownie Shield		
H	Rainbows	Rainbow Cup		
I	School's Breakfast Clubs	Breakfast Club Shield		
Group	Class	1st Prize	2nd Prize	3rd Prize
J*	Decorated Victoria Sponge Cake (11 & Under)	£3	£2	£1
K*	Decorated Victoria Sponge Cake (Age 12 - Adult)	£3	£2	£1
L	Construction of a Hedgehog House to be built with old or new timber (if treated, must be with water based preservative only). Must be Homemade (No Commercial Kits) to fit within a 40cm square. Age 16 and under. <i>(Sponsored by Standens Engineering Ltd.)</i>	£25 + Tony Brown Memorial Trophy	£2	£1
M	Photographic Competition open to all ages. Submit a photo (10 x 15cm) on the theme of 'Wild and Beautiful' (British wildlife - Flora and/or Fauna - only please).	£3	£2	£1
N	Colour A Picture (Under 8s) (Sponsored by Soham Books) www.sohampumpkinfair.co.uk/documents/colouring_competition_2021.pdf	£15 Book Token	£10 Book Token	£5 Book Token

Indoor Competitions

Group	Class	1st Prize	2nd Prize	3rd Prize
O*	A HANDWRITTEN poem Poetry (7-11) <i>(Sponsored by Heffers)</i>	£15 Book Token	£10 Book Token	£5 Book Token
P*	A HANDWRITTEN poem Poetry (12-Adults) <i>(Sponsored by Soham Books)</i>	£15 Book Token	£10 Book Token	£5 Book Token
Q	Largest Bloom of any type or colour (excl. Sunflower)	£3	£2	£1
R	Cut Flowers: 5 stems of any of your home grown blooms	£3	£2	£1
S*	Floral Arrangement: A table arrangement on the required theme	£3	£2	£1
T*	Farm and Garden Produce Sculpture: on the theme 'Wild and Beautiful' <i>For Children only</i>	£3 + Graham Rowley Cup	£2	£1
U	Funniest Shaped Vegetable No painting, alteration or accessories are permitted	£3	£2	£1
*Decorate with fruit and/or veg. Minimal props and accessories accepted.				
V	Homemade Bread of your choice (Written recipe to be included)	£3	£2	£1
W	A jam of your choice (Written recipe to be included)	£3	£2	£1
X	A chutney of your choice (Written recipe to be included)	£3	£2	£1
Y*	Needlecraft, Sewing, Knitting or Crochet of your choice, but on the required theme.	£3	£2	£1
Z	Under 16: Hand Drawn Design for the Front Cover of Next Year's Brochure.	The Alpha Trophy		
*Groups J, K, O, P, S, & Y must be presented on the theme of 'Wild and Beautiful' (British wildlife only please)				



Sales

Repairs

Servicing

Parts

Clothing & Accessories

Key Cutting

**We Offer a Quality,
Affordable
Bicycle Repair Service
to the Local
Community**

**2a Station Road,
Soham CB7 5DY**

Tel: 01353 720604

**Email: [soham-
cycles@btconnect.com](mailto:soham-cycles@btconnect.com)**

or find us on Facebook

Jak Hibs of Soham

33 High Street, Soham

Tel No: 07517449212



*Household Items, Cookware,
Cleaning Products, Crafts,
Pocket Money Toys,
Hosiery, Storage Boxes, Pet Treats,
Stationery, Candles, Hair Accessories,
Light Bulbs, & Lots More.*

Feel free to pop in even if it's only to look around.

MICHAEL ANTONY

RATPACK AND SWING VOCALIST

**Weddings, Parties,
Dinners, Hotels or Clubs**

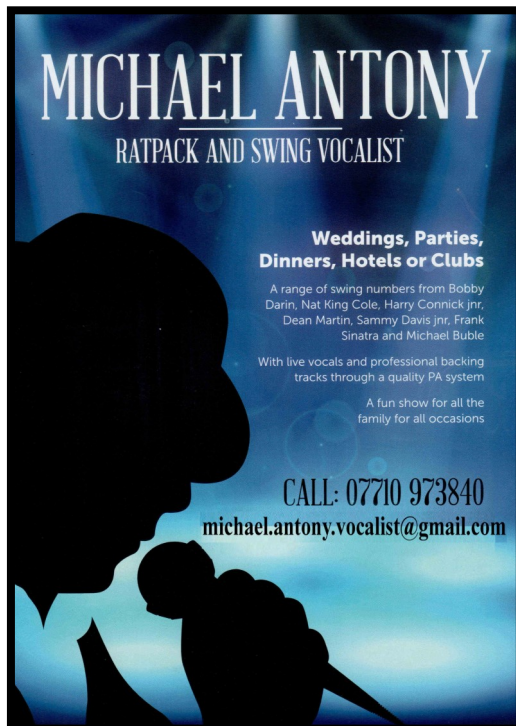
A range of swing numbers from Bobby
Darin, Nat King Cole, Harry Connick jnr,
Dean Martin, Sammy Davis jnr, Frank
Sinatra and Michael Buble

With live vocals and professional backing
tracks through a quality PA system

A fun show for all the
family for all occasions

CALL: 07710 973840

michael.antony.vocalist@gmail.com



Entry Form - Entry in all classes are FREE

Name _____

Email Address _____

Tel No. _____

Groups Entered _____



Please hand in this Entry Form when booking in



Label

Name _____

Group Entered _____



Please use this to label your entries

More Labels and Entry Forms can be found on our
website www.sohampumpkinfair.co.uk

Please note: we will hold your personal data for a year. Only winners names will be published on our website and sent to local press.

CLT TYRE & EXHAUST

123 Mereside, Soham CB7 5EG

01353 721327

www.clttyres.com or follow us on Facebook

Call Out Service Available

CLT Tyre and Exhaust are a family run business that was established in 1983. We pride ourselves in delivering competitive prices along with a professional service.



Soham Electrical Ltd

Reliable and professional local electrician

Wide range of electrical services including:

- Socket installations
- Alterations
- Indoor and outdoor lighting
- Fault finding
- EICR's
- Consumer Units
- Outdoor power feeds

01353 722240

www.SohamElectrical.com



NHS PRESENTS

The
VACCINATORS
on tour

**DAILY COVID-19 VACCINE
WALK-IN CLINICS**

1ST AND 2ND DOSES*

7 DAYS A WEEK, 9AM-3PM

*SECOND DOSES ONLY AVAILABLE 8+ WEEKS AFTER FIRST DOSE

AstraZeneca (aged 40+) AND Pfizer vaccines (18+) at:

- Horsefair Shopping Centre, Wisbech
- City Care Centre, Peterborough
- The Eatons Community Centre, Eaton Socon
- The Grafton Centre, Cambridge
- The Oaktree Centre, Huntingdon
- East of England Showground, Peterborough (**ALSO MODERNA**)

Pfizer only:

- Cherry Hinton Village Leisure Centre, Cambridge

Evening clinics (Pfizer/AstraZeneca) 5.30pm-7.30pm:

- Mondays: Horsefair Shopping Centre, Wisbech
- Tuesdays: City Care Centre, Peterborough
- Tuesdays: The Eatons Community Centre, Eaton Socon
- Wednesdays: The Grafton Centre, Cambridge
- Thursdays: The Oaktree Centre, Huntingdon
- Thursdays: East of England Showground, Peterborough (**ALSO MODERNA**)

Prefer to book an appointment? Visit nhs.uk/CovidVaccine or call 119

#TheVaccinators

thevaccinators.co.uk

Transport can be booked through VCAEC (Volunteer Centre for East Cambs.) who run the East Cambs. Social Car Scheme, contact them on 01353 666553.

***Walk-in Clinics will be available in Soham during September.
Look out for the dates and venue when confirmed.***

We must keep on protecting each other.

We want everybody to be as safe as possible at the Pumpkin Fair, with that in mind, we would like everybody (if possible) to test negative, be double vaccinated and have an NHS COVID Pass before you come to our event.

Please follow advice given by our stewards
and on signs at the Fair:

- ◆ Use hand sanitiser
- ◆ Keep socially distanced
- ◆ Wear face coverings indoors
- ◆ Wear face coverings in crowds outdoors
- ◆ Follow our one-way systems

Thank you



COVID-19
Let's take this next step, safely.

STAY ALERT ▶ CONTROL THE VIRUS ▶ SAVE LIVES